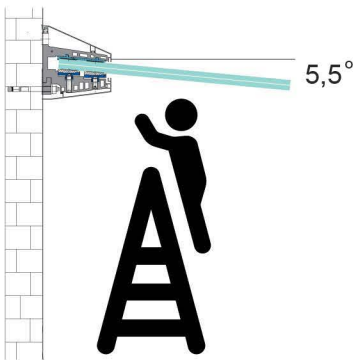
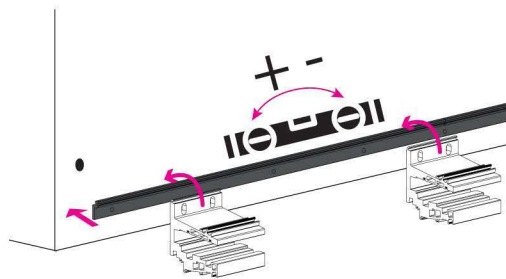


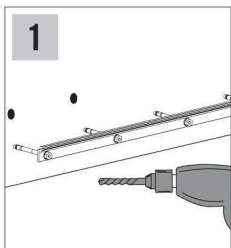
The number of holes in the glass is minimally reduced, in fact only two holes are provided for each glass to accommodate the safety pin.



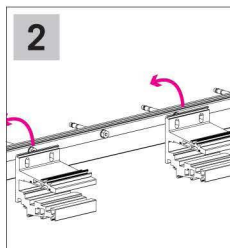
All the fixing operation of this canopy is made only by operating from the lower part, so the use of ladders and scaffolding is very limited compared to the canopy systems currently on the market.



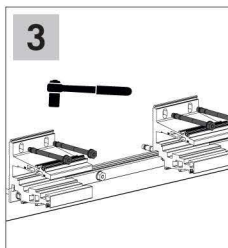
The Alignment of the canopy is easy thanks to the alignment brackets that allows to put everything at the level before installing the glass support jaws.



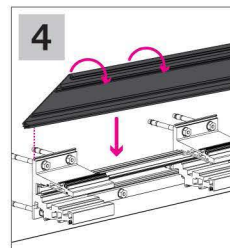
1 Drill holes in the wall and secure the lower support brackets.



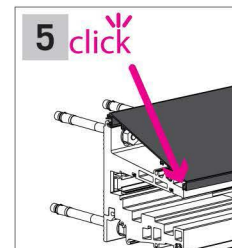
2 Mount the upper modules by connecting them to the bracket; maximum horizontal movement allowed.



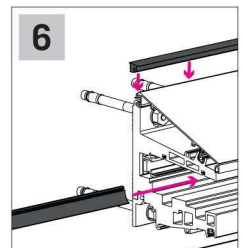
3 Fasten the units with the appropriate dowels.



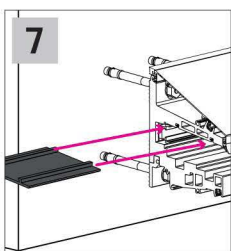
4 Secure the upper cover with one rotation on the indicated pin.



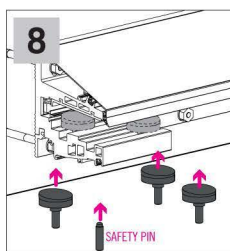
5 **click** CLICK sound means a correct installation.



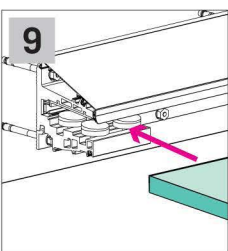
6 insert the gaskets on wall and glass sides of the canopy.



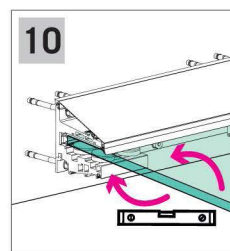
7 Insert the top gasket



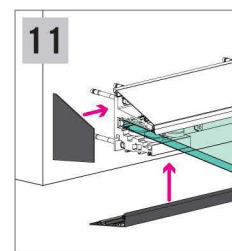
8 Insert gaskets and adjustable glass fixing systems. Use of safety pins is recommended.



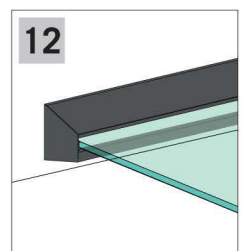
9 Insert the glass inside the canopy. Slide the glass until it touches the stop. Gasket just inserted.



10 Adjust the inclination of the glass with the specific gaskets and tighten the safety pins. After adjusting the glass, fix all the gaskets.



11 Apply the lower cover with the gasket along the canopy and then add the closing caps.



12 Completed job.